

High Pressure Pumps

TFS6, FFS6

Screw spindles



2-pole motor rotation speed 3500 RPM							4-pole motor rotation speed 1750 RPM					
Pressure max.	Flow at viscosity		Power consumption of viscosity		Motor	Weight	Flow at viscosity		Power consumption of viscosity		Motor	Weight
	5 SSU	90 SSU	5 SSU	90 SSU	NEMA		5 SSU	90 SSU	5 SSU	90 SSU	NEMA	
Type / bar / PSI	GPM	GPM	HP	HP	HP	Lbs	GPM	GPM	HP	HP	HP	Lbs
TFS690/	Q_{Th}¹⁾ 146.4		-	-	-	-	Q_{Th}¹⁾ 73.2		-	-	-	-
10 / 145	142.7	144.0	15.6	17.8	25	461	69.5	70.8	7.5	8.3	10	392
20 / 290	140.6	142.7	28.0	30.3	40	642	67.4	69.5	13.7	14.5	20	437
30 / 435	138.4	141.3	40.4	42.6	50	688	65.3	68.2	20.0	20.8	25	474
40 / 580	136.3	140.3	52.7	55.0	60	955	63.1	67.1	26.1	27.0	30	567
50 / 725	134.5	139.2	65.2	67.5	75	1120	61.3	66.1	32.3	33.1	40	677
60 / 870	132.6	138.2	77.5	79.8	100	1396	59.4	65.0	38.5	39.3	50	677
70 / 1015	131.0	137.1	89.8	92.1	100	1396	57.9	63.9	44.7	45.5	50	889
80 / 1160	129.5	136.1	102.3	104.6	125	1572	56.3	62.9	50.8	51.6	60	889
TFS6120/	Q_{Th}¹⁾ 195.2		-	-	-	-	Q_{Th}¹⁾ 97.5		-	-	-	-
10 / 145	190.2	191.8	19.7	22.0	30	536	92.7	94.3	9.7	10.5	15	437
20 / 290	187.6	190.5	36.2	38.5	50	688	90.1	92.7	17.8	18.6	25	474
30 / 435	185.2	188.9	52.7	55.0	60	955	87.5	91.4	26.1	27.0	30	549
40 / 580	182.8	187.6	69.2	71.5	100	1396	85.1	89.8	34.3	35.1	40	677
50 / 725	180.4	186.0	85.8	88.1	100	1396	83.0	88.5	42.6	43.4	50	677
60 / 870	178.6	184.7	102.3	104.6	125	1572	80.8	87.2	50.8	51.6	60	889
70 / 1015	176.5	183.6	118.8	121.1	150	1923	79.0	85.9	59.1	59.9	75	966
80 / 1160	174.1	182.0	135.4	138.1	150	1923	76.6	84.5	67.3	68.1	75	1197
TFS6145/	Q_{Th}¹⁾ 235.9		-	-	-	-	Q_{Th}¹⁾ 117.8		-	-	-	-
10 / 145	229.9	232.0	23.2	25.5	40	642	112.0	114.1	11.3	12.1	15	437
20 / 290	226.4	229.3	43.2	45.5	60	955	108.6	111.5	21.3	22.1	25	549
30 / 435	223.2	226.9	63.0	65.3	75	1120	105.2	109.1	31.2	32.1	40	677
40 / 580	220.1	224.8	83.0	85.3	100	1396	102.0	107.0	41.3	42.1	50	677
50 / 725	217.2	223.0	103.0	105.3	125	1572	99.1	104.9	51.2	52.0	60	889
60 / 870	214.3	221.1	123.0	125.3	150	1923	96.4	103.3	61.2	62.0	75	966
70 / 1015	211.1	219.0	143.0	145.2	150	1923	93.3	100.9	71.2	72.0	75	1197

¹⁾ Q_{Th}: Theoretical flow rate

Viscosity > 90 SSU more power consumption.

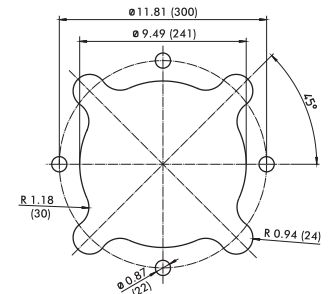
All 6 series screw pumps with an operating flow rate of 210 GPM / 800 l/min or above must be operated with a feed pump which supplies fluid with at least 14.5 psi / 1 bar of pressure to the pump inlet.

Characteristics and dimensions

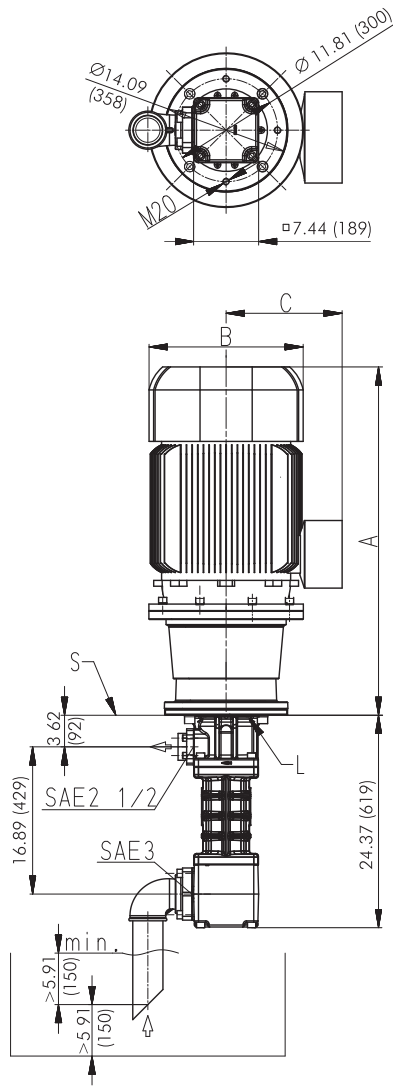
TFS6, FFS6

Mounting hole patterns

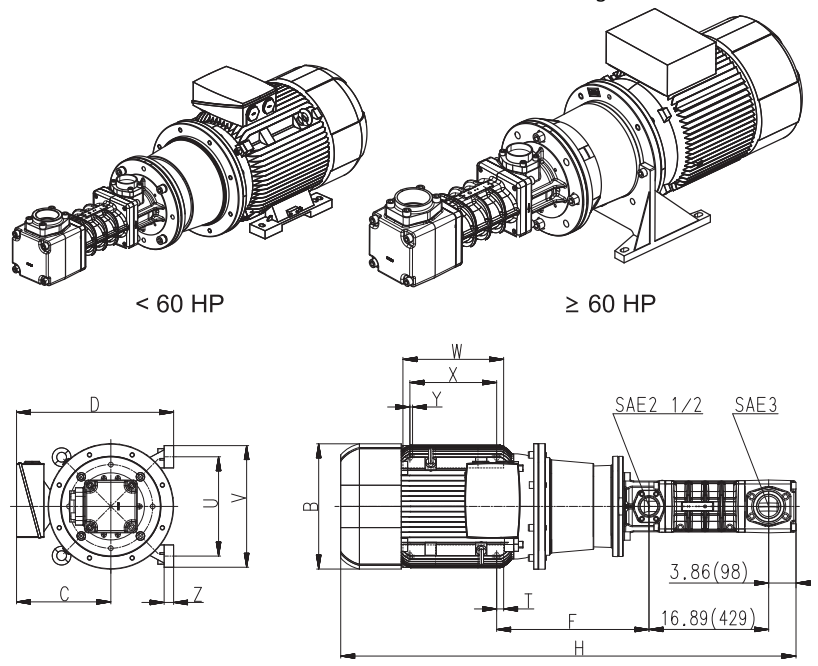
TFS6



Dimensions in inches / mm
All corners must be deburred!
According to ISO 2768-m



*) Dimensions for 4-pole standard motor upon request
L = Leakage hole
S = Mounting plate, please refer to the cut-out of mounting hole



Power 2-poles HP	Power 4-poles HP	A Inch	B Inch	C Inch	D Inch	F Inch	H Inch	T Inch	U Inch	V Inch	W Inch	X Inch	Y Inch	Z Inch
-	10	28.46	10.31	7.95	15.24	9.53	52.83	0.89	10.43	11.81	10.63	8.86	0.55	0.71
-	15	31.30	12.36	9.33	18.58	9.53	55.67	0.79	11.81	13.78	12.01	10.43	0.71	0.71
-	20	33.66	12.36	9.33	18.58	10.43	58.03	0.79	11.81	13.78	12.01	10.43	0.71	0.71
25	-	33.66	12.36	9.33	19.57	9.53	58.03	0.98	13.78	15.75	13.78	11.81	0.71	0.79
-	25	33.82	14.02	11.26	20.51	10.43	58.19	0.79	11.81	13.78	12.01	10.43	0.71	0.71
30	-	33.66	14.02	11.26	21.50	9.53	58.03	0.98	13.78	15.75	13.78	11.81	0.71	0.79
-	30	35.00	14.02	11.26	20.51	15.63	59.37	0.79	11.81	13.78	12.01	10.43	0.71	0.71
40	-	35.83	15.59	12.40	22.64	10.43	60.20	0.98	13.78	15.75	13.78	11.81	0.71	0.79
-	40	36.81	15.59	12.40	22.64	16.42	61.18	0.98	13.78	15.75	13.78	11.81	0.71	0.79
50	-	36.81	15.59	12.40	22.64	10.43	61.18	0.98	13.78	15.75	13.78	11.81	0.71	0.79
-	50	38.31	17.68	13.31	22.64	17.01	62.68	0.98	15.75	17.72	15.16	13.19	0.71	0.79
60	-	39.88	17.68	13.31	22.17	21.50	64.25	0.98	14.02	17.17	14.21	12.24	0.75	1.34
-	60	39.88	17.68	13.31	22.17	21.50	64.25	0.98	14.02	19.29	17.17	12.24	0.75	1.34
75	-	42.20	19.57	16.14	25.98	23.03	66.57	1.18	15.98	19.29	16.10	13.74	0.94	1.57
-	75	42.80	19.57	16.14	25.98	23.62	67.17	1.18	15.98	19.29	16.10	13.74	0.94	1.57
100	-	45.67	21.69	17.05	28.07	24.49	70.04	2.19	17.99	21.26	18.86	14.49	0.94	1.57
125	-	50.00	21.69	17.05	28.07	24.49	74.37	1.18	17.99	21.26	18.86	16.50	0.94	1.57
150	-	48.90	24.25	20.28	32.68	25.12	73.27	2.38	20.00	24.02	20.75	15.98	1.10	1.97