

Horizontal End-Suction Pumps

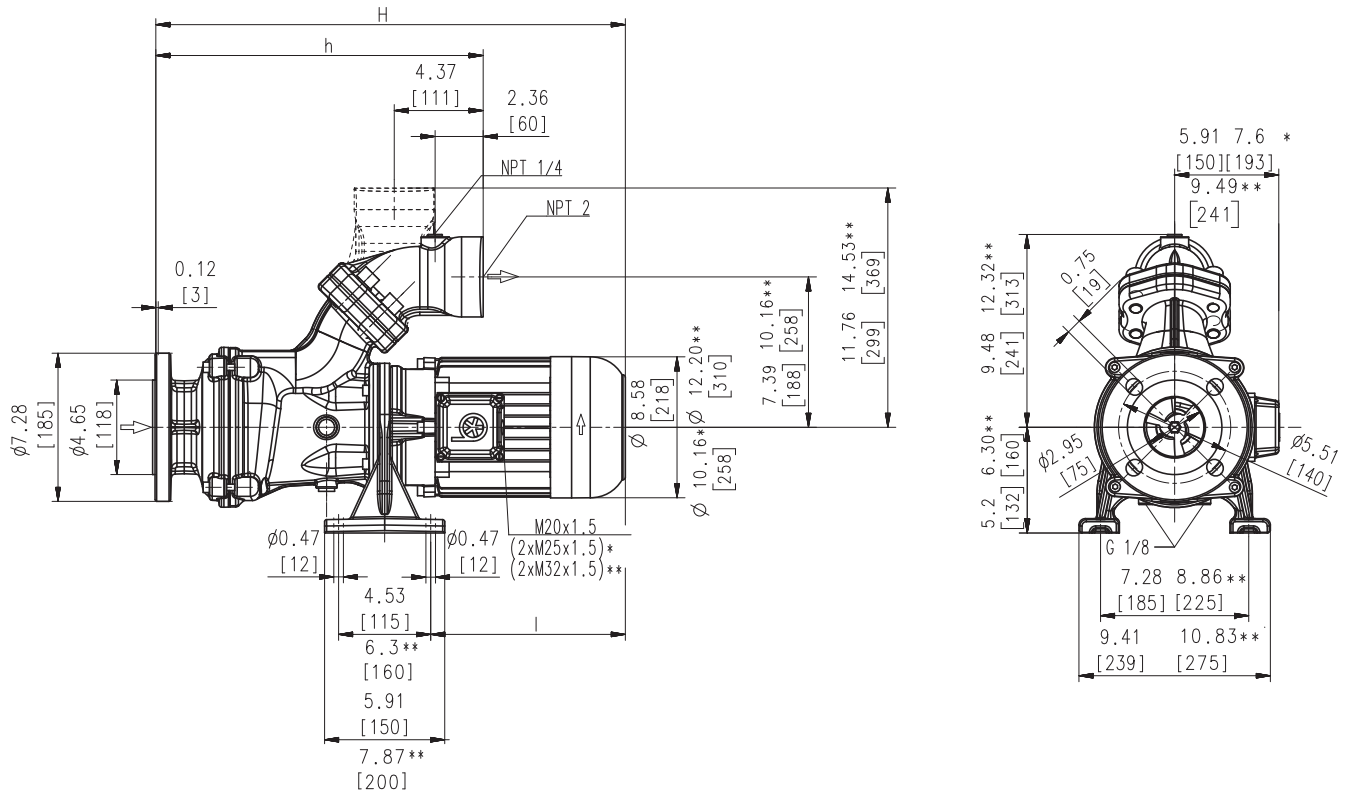
SBG1101S...1103S

Axial/semi-open impellers



60 Hz

SBG1101S...1103S



Dimensions in Inches / mm

*) Dimensions SBG1102S

**) Dimensions SBG1103S

Type	Flow at head	Dimensions		Length		Weight		Power	Voltage 3~	Fre- quen- cy	Current	Speed		
	GPM /Feet l/min /m	H inch	H mm	h inch	h mm	l Inch	l mm						Lbs	kg
SBG1101S	225/40	27.8	705	16.3	413	14.1	358	161.0	73	7.7	230	60	19.0	3520
	850/12									5.75	460	60	9.5	3520
SBG1102S	225/76	34.0	863	19.4	492	17.2	437	258	117	13.8	230	60	31.6	3550
	850/24									10.3	460	60	15.8	3550
SBG1103S	225/105	37.4	951	25.3	643	16.6	422	313	142	20.1	230	60	48.2	3560
	850/32									15.0	460	60	24.1	3560



Horizontal End-Suction Pumps

are centrifugal inline pumps with a compact design where the impeller is mounted onto the extended motor shaft. These pumps are not self-priming and must be gravity fed. All pumps are equipped with a single mechanical seal. Upon request a second mechanical seal is available to allow for dry-running (-GD). This pump series is designed for horizontal installations next to a tank and for pumping **highly air entrained coolant and cutting oils**, as they occur in **high speed grinding applications**. The SBG pumps are equipped with the user-friendly 45 degree **flange** connection which allows for either vertical or horizontal pipe connection and the connection of a pressure gauge with NPT 1/4. For more information see mechanical features within the technical information section.

Applications

- Types of fluid
 - coolants
 - cooling/cutting oils
 - grinding oils
- Kinematic viscosity
 - ...200 SSU (...45 mm²/s)
- Pumping temperature
 - 30...175 °F (0...80 °C)

Construction

Pump body	cast iron
Cover	cast iron
Impeller axial	cast steel
Impeller radial	cast steel
Shaft	steel
Mechanical seal	SiC
Noise level (Motor only; Tolerance +3 dBA)	
SBG1101S	76 dBA
SBG1102S...1103S	79 dBA

