

Horizontal End-Suction Pumps

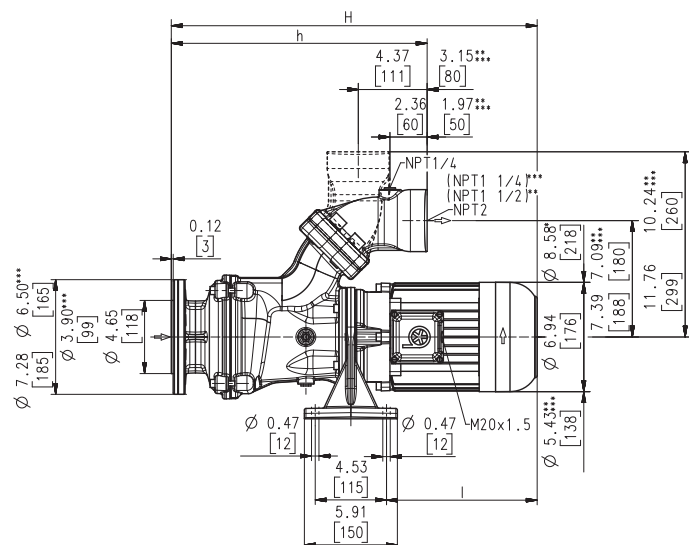
SBF125S...1150S

Axial/semi-open impellers



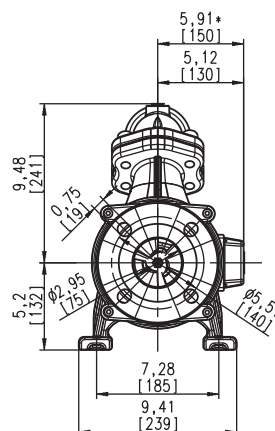
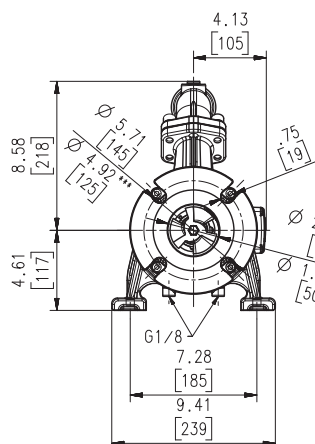
60 Hz

SBF125S...1150S



SBF125S, 550S

SBF650S, 850S, 1150S



Dimensions in Inches / mm; *) Dimensions SBF850S, 1150S
 **) Dimensions SBF550S
 ***) Dimensions SBF125S

Type	Flow at head	Dimensions				Length		Weight		Power	Voltage 3 ~	Fre- quen- cy	Current	Speed
	GPM /Feet l/min /m	H inch	H mm	h inch	h mm	l Inch	l mm	Lbs	kg	HP kW	V	Hz	AMPS	RPM
SBF125S	25/20 80/7	19.6	497	14.1	359	7.2	184	62.8	28.5	1 0.725	208-230 460	60 60	3.02 1.46	3425 3425
SBF550S	75/12 250/5	20.6	524	14.2	360	8.3	211	66.2	30	1.7 1.27	230 460	60 60	4.8 2.4	3440 3440
SBF650S	100/36 400/10	24.9	632	16.1	409	11.4	289	121.3	55	3.4 2.55	230 460	60 60	8.8 4.4	3480 3480
SBF850S	125/42 500/12	26.6	675	16.3	413	12.9	328	147.7	67	5.1 3.8	230 460	60 60	12.8 6.4	3520 3520
SBF1150S	150/47 600/13	26.6	675	16.3	413	12.9	328	158.8	72	6.1 4.55	230 460	60 60	15.8 7.9	3520 3520



Horizontal End-Suction Pumps

are centrifugal inline pumps with a compact design where the impeller is mounted onto the extended motor shaft.

These pumps are not self-priming and must be gravity fed. All pumps are equipped with a single mechanical seal.

Upon request a second mechanical seal is available to allow for dry-running (-GD).

This pump series is designed for horizontal installations next to a tank and for pumping **air entrained coolant fluids**, such as **water-soluble coolants (emulsions)**, as they occur in **high speed machining applications, such as turning and milling**.

The SBF* pumps are equipped with the user-friendly 45 degree **flange** connection which allows for either vertical or horizontal pipe connection and the connection of a pressure gauge with NPT 1/4.

*) SBF550S with SAE flange.

For more information see mechanical features within the technical information section.

Applications

Types of fluid

coolants
cooling/cutting oils

Max. chip to coolant ratio by weight:
1.0 % depending on the specific chip type

Chip material:

Aluminium, steel, coloured steels,
cast iron

Kinematic viscosity
...200 SSU (...45 mm²/s)

Pumping temperature
30...175 °F (0...80 °C)

Construction

Pump body	cast iron
Cover	cast iron
Impeller axial	cast steel
Impeller radial	cast steel
Shaft	steel
Mechanical seal	SiC
Noise level (Motor only; Tolerance +3 dBA)	
SBF125S	64 dBA
SBF550S	65 dBA
SBF650S	69 dBA
SBF850S...SBF1150S	74 dBA

