

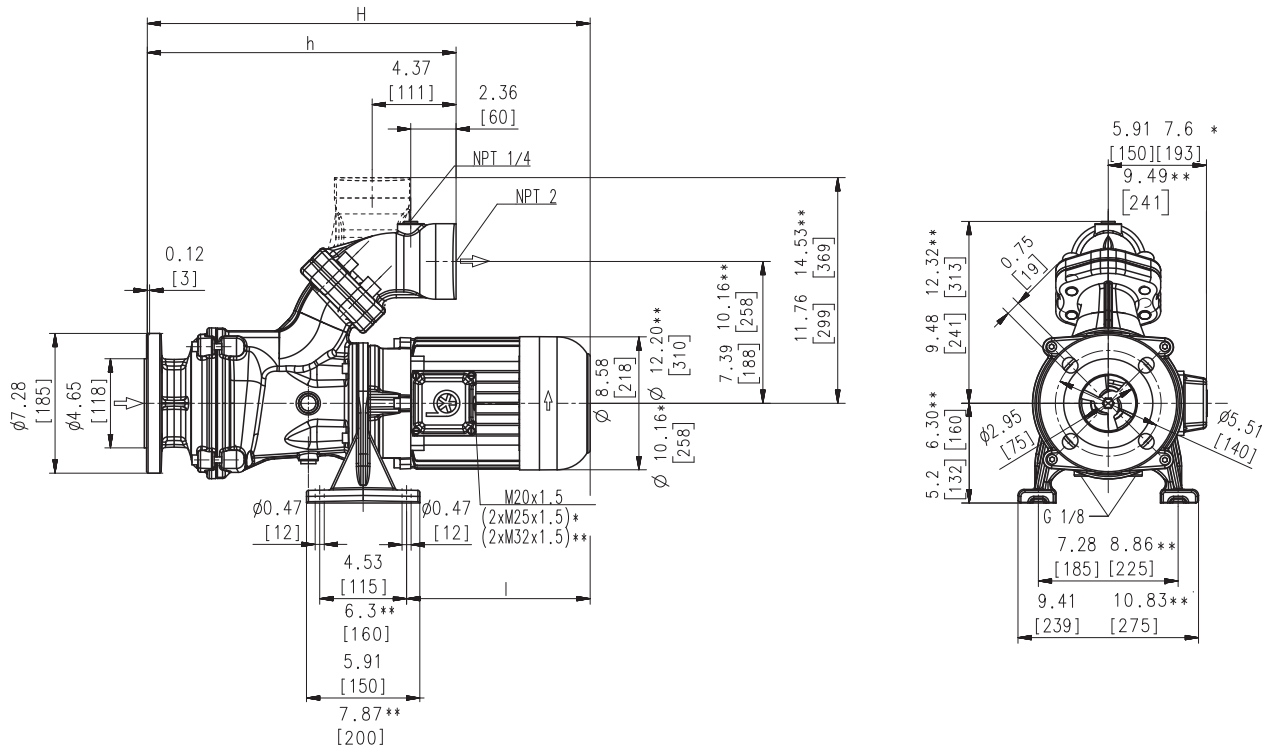
SBA1301S...1303S

Axial/semi-open impellers



60 Hz

SBA1301S...1303S



Dimensions in Inches / mm,

*) Dimensions SBA1302S

**) Dimensions SBA1303S

Type	Flow at head	Dimensions				Length		Weight		Power	Voltage 3 ~	Fre- quen- cy	Current	Speed
	GPM /Feet l/min /m	H inch	H mm	h inch	h mm	l Inch	l mm	Lbs	kg	HP kW	V	Hz	AMPS	RPM
SBA1301S	225/44 900/12	27.8	705	16.3	413	14.1	358	161.0	73	7.7	230	60	19.0	3520
										5.75	460	60	9.5	3520
SBA1302S	225/90 900/25	34.0	863	19.4	492	17.2	437	258	117	11.5	230	60	27.8	3550
										8.6	460	60	13.9	3550
SBA1303S	225/135 900/39	37.4	951	25.3	643	16.6	422	313	142	16.9	230	60	39.2	3560
										12.6	460	60	19.6	3560



Horizontal End-Suction Pumps

are centrifugal inline pumps with a compact design where the impeller is mounted onto the extended motor shaft.

These pumps are not self-priming and must be gravity fed. All pumps are equipped with a single mechanical seal.

Upon request a second mechanical seal is available to allow for dry-running (-GD).

This pump series is designed for horizontal installations next to a tank and for pumping **air entrained coolant** fluids, such as **water-soluble coolants or cutting oils**, as they occur in **high speed turning, milling or grinding applications**.

The SBA pumps are equipped with the user-friendly 45 degree **flange** connection which allows for either vertical or horizontal pipe connection and the connection of a pressure gauge with NPT 1/4.

For more information see mechanical features within the technical information section.

Applications

Types of fluid
coolants
cooling/cutting oils
Kinematic viscosity
...200 SSU (...45 mm²/s)
Pumping temperature
30...175 °F (0...80 °C)

Construction

Pump body	cast iron
Cover	cast iron
Impeller axial	cast steel
Impeller radial	cast steel
Shaft	steel
Mechanical seal	SiC
Noise level (Motor only; Tolerance +3 dBA)	
SBA1301S	73 dBA
SBA1302S	78 dBA
SBA1303S	79 dBA

