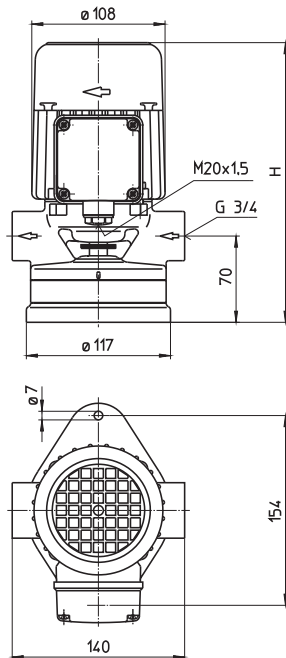


Suction Pumps

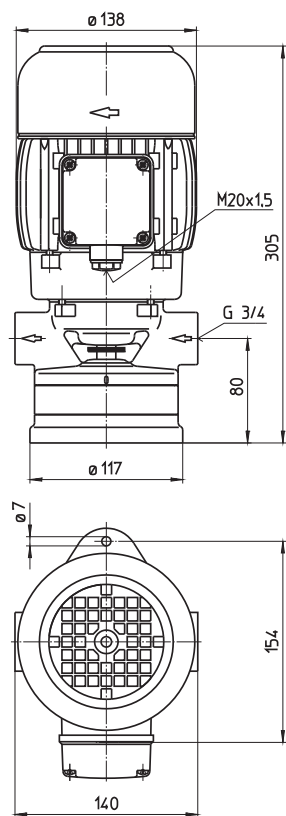
SB20...60

Open impellers

SB20, 40



SB60



Type	Vol. del. at manom. del. head l/min / m	Height H mm	Weight kg	Power kW	Voltage 3~ V	Fre- quen- cy Hz	Current A	Speed 1/min
SB20	23/2	263	6	0.22	220-240	50	1.14	2800
					380-415	50	0.66	2800
				0.255	460	60	0.62	3370
SB40	43/2	288	7	0.32	220-240	50	1.58	2825
					380-415	50	0.91	2825
				0.365	460	60	0.84	3400
SB60	47/2	305	10.5	0.48	220-240	50	2.06	2820
					380-415	50	1.19	2820
				0.55	460	60	1.14	3405

Suction Pumps

are self-priming following the initial priming, and operate according to the bypass duct principle. We recommend pump models featuring bronze body elements for pumping water without anti-corrosion additives.

The dimensions are based on standard specification EN 12157.

Applications

- Types of fluid
 - coolants
 - cooling/cutting oils
 - fuel oil
 - water (with anticorrosive additive)
- Kinematic viscosity
 - ...60 mm²/s (60 cSt)
- Pumping temperature
 - 0...80° C
- Suction height
 - 1 - 2 m without foot-located valve
 - 4 - 6 m with foot-located valve

Construction

Pump body	cast iron
Cover	cast iron
Impeller	brass
Shaft	steel
Mechanical seal	graphite based
O-rings	Viton
Optional:	
Pump body	bronze (SB20...SB40)
Cover	bronze (SB20...SB40)
Impeller	CrNi-steel
Noise level	
SB20...SB40	54 dBA
SB60	64 dBA

