

High Pressure Pumps

BFS1, FFS1

Screw spindles

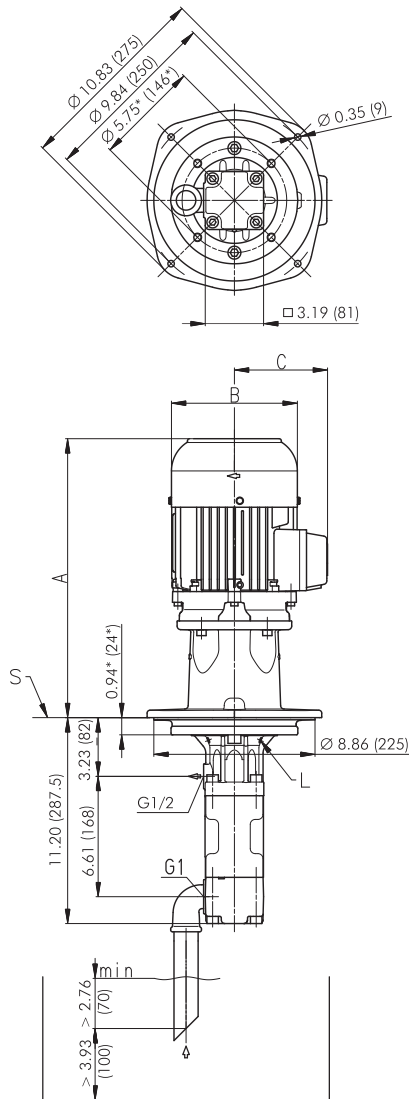


2-pole motor rotation speed 3500 RPM								4-pole motor rotation speed 1750 RPM					
Pressure max.	Flow at viscosity		Power consumption of viscosity		Motor immersion version IE3/NEMA	Motor foot mounted version NEMA	Weight	Flow at viscosity		Power consumption of viscosity		Motor NEMA	Weight
	5 SSU	90 SSU	5 SSU	90 SSU				5 SSU	90 SSU	5 SSU	90 SSU		
	Type / bar / PSI	GPM	GPM	HP	HP	HP		HP	Lbs	GPM	GPM	HP	
BFS130S	Q _{Th} ¹⁾ 5.0		-	-	-	-	-	Q _{Th} ¹⁾ 2.5		-	-	-	-
10 / 145	4.6	4.8	0.8	0.8	B 2	1	86	2.1	2.3	0.4	0.4	1	66
20 / 290	4.3	4.7	1.2	1.2	B 2	1.5	86	1.8	2.2	0.5	0.5	1	66
30 / 435	4.1	4.6	1.6	1.6	B 2	2	86	1.6	2.1	0.8	0.8	1	66
40 / 580	3.8	4.5	2.0	2.0	B 2.3	3	86	1.3	2.0	0.9	1.1	1.5	71
50 / 725	3.6	4.4	2.4	2.5	B 2.9	3	97	1.1	1.9	1.2	1.3	1.5	71
60 / 870	3.4	4.3	2.8	3.0	B 3.4	4	97	0.8	1.8	1.3	1.5	2	71
70 / 1015	3.1	4.2	3.2	3.4	B 3.9	4	99	-	1.7	-	1.7	2	75
80 / 1160	2.9	4.1	3.8	3.9	B 4.6	5	126	-	1.7	-	2.0	3	75
90 / 1305	2.7	4.1	4.2	4.3	B 4.6	5	126	-	1.6	-	2.1	3	75
100 / 1450	2.5	4.0	4.6	4.7	B 5.1	5	126	-	1.5	-	2.4	3	99
110 / 1595	2.3	3.9	5.0	5.2	B 6.1	7.5	128	-	1.4	-	2.7	3	99
120 / 1740	2.1	3.8	5.4	5.6	B 6.1	7.5	128	-	1.3	-	2.8	3	99
130 / 1885	-	3.7	-	6.0	B 7.7	7.5	139	-	-	-	-	-	-
140 / 2030	-	3.6	-	6.6	B 7.7	7.5	139	-	-	-	-	-	-
150 / 2175	-	3.6	-	7.0	B 7.7	7.5	139	-	-	-	-	-	-
BFS140S	Q _{Th} ¹⁾ 6.7		-	-	-	-	-	Q _{Th} ¹⁾ 3.3		-	-	-	-
10 / 145	6.1	6.4	0.9	0.9	B 2	1.5	86	2.8	3.1	0.4	0.5	1	66
20 / 290	5.8	6.3	1.5	1.6	B 2	2	86	2.4	3.0	0.7	0.8	1	66
30 / 435	5.4	6.2	2.0	2.1	B 2.3	3	86	2.1	2.8	0.9	1.1	1.5	71
40 / 580	5.2	6.1	2.5	2.7	B 2.9	3	97	1.8	2.7	1.2	1.3	1.5	71
50 / 725	4.9	5.9	3.2	3.4	B 3.9	4	99	1.5	2.6	1.5	1.6	2	75
60 / 870	4.6	5.8	3.8	3.9	B 4.6	4	126	1.2	2.5	1.7	2.0	2	75
70 / 1015	4.3	5.7	4.3	4.4	B 5.1	5	126	1.0	2.3	2.0	2.3	3	99
80 / 1160	4.1	5.5	4.8	5.1	B 6.1	7.5	128	-	2.2	-	2.5	3	99
90 / 1305	3.9	5.4	5.4	5.6	B 6.1	7.5	128	-	2.1	-	2.8	3	99
100 / 1450	3.6	5.3	6.0	6.3	B 7.7	7.5	139	-	2.0	-	3.1	4	99
110 / 1595	3.3	5.2	6.6	6.8	B 7.7	7.5	139	-	1.8	-	3.4	4	99
120 / 1740	3.1	5.1	7.1	7.4	B 7.7	7.5	139	-	1.7	-	3.6	4	99
130 / 1885	2.8	4.9	7.6	8.0	B 8.4	10	163	-	-	-	-	-	-
140 / 2030	2.6	4.8	8.2	8.6	B 9.2	10	192	-	-	-	-	-	-
150 / 2175	2.3	4.7	8.9	9.3	B 10	10	192	-	-	-	-	-	-

¹⁾ Q_{Th}: Theoretical flow rate ; Viscosity > 90 SSU more power consumption.
Higher pressure for water soluble coolants (up to 2900 psi / 200 bar) upon request.

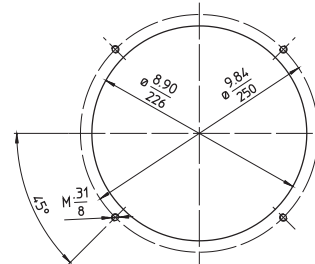
Characteristics and dimensions

BFS1, FFS1

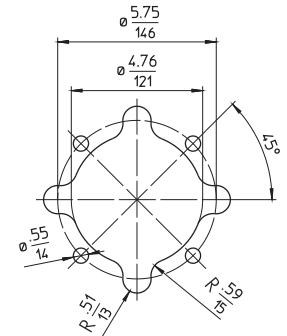


Mounting hole patterns

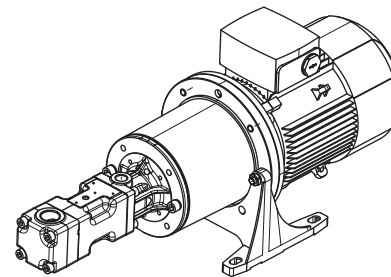
BFS1 / BFS2



TFS1 / TFS2



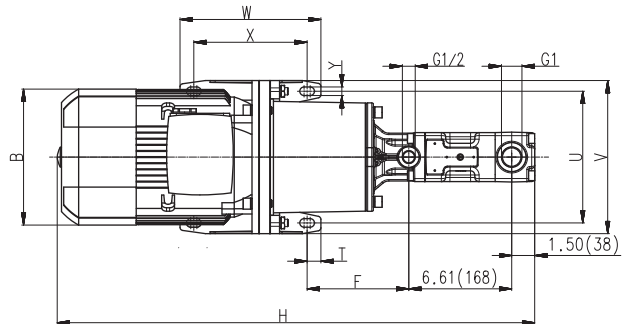
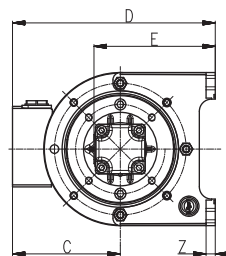
Dimensions in Inches / mm
All corners must be deburred!
According to ISO 2768-m



*) Dimensions for 4-pole standard motor upon request

L = Leakage hole

S = Mounting plate, please refer to the cut-out of mounting hole



Power 2-poles HP	A Inch	B Inch	C Inch
B 2 / 2.3	16.34	6.93	5.12
B 2.9 / 3.4 / 3.9	18.66	6.93	5.12
B 4.6 / 5.1 / 6.1	20.20	8.58	5.91
B 7.7 / 8.4	21.38	8.58	5.91
B 9.2 / 10	22.99	10.16	7.60

Power 2-poles HP	Power 4-poles HP	B Inch	C Inch	D Inch	E Inch	F Inch	H Inch	T Inch	U Inch	V Inch	W Inch	X Inch	Y Inch	Z Inch
1	–	6.26	4.76	9.17	6.10	5.43	26.61	0.59	7.09	8.27	3.54	2.36	0.43	0.47
–	1	6.26	4.76	9.17	6.10	5.43	29.57	0.59	7.09	8.27	3.54	2.36	0.43	0.47
1.5	–	6.26	4.76	9.17	6.10	5.43	27.99	0.59	7.09	8.27	3.54	2.36	0.43	0.47
2	1.5 / 2	7.01	4.96	9.37	6.10	5.43	28.39	0.59	7.09	8.27	3.54	2.36	0.43	0.47
3	–	7.01	4.96	9.37	6.10	5.43	29.96	0.59	7.09	8.27	3.54	2.36	0.43	0.47
4	3 / 4	7.80	6.54	12.64	7.80	6.54	32.32	0.89	8.46	9.84	9.06	7.28	0.55	0.59
5	–	8.74	6.97	13.07	7.80	6.54	31.69	0.89	8.46	9.84	9.06	7.28	0.55	0.59
7.5	–	10.31	7.95	15.24	8.98	6.73	33.74	0.89	10.43	11.81	10.63	8.86	0.55	0.71
10	–	10.31	7.95	15.24	8.98	6.73	35.71	0.89	10.43	11.81	10.63	8.86	0.55	0.71