

High Pressure Pumps



BFS1, FFS1

50 Hz

Screw spindles

Pressure max.	Flow at viscosity		2-pole motor rotation speed 2900 RPM					4-pole motor rotation speed 1450 RPM					
			Power consumption of viscosity		Motor immersion version	Motor foot mounted version	Weight	Flow at viscosity		Power consumption of viscosity		Motor	Weight
			5 SSU	90 SSU				5 SSU	90 SSU	5 SSU	90 SSU		
Type / bar / PSI	GPM	GPM	HP	HP	HP	HP	Lbs	GPM	GPM	HP	HP	HP	Lbs
BFS130/	Q_{Th}¹⁾ 4.1		-	-	-	-	-	Q_{Th}¹⁾ 2.1		-	-	-	-
10 / 145	3.7	4.0	0.7	0.7	B 1.7	1	86	1.6	1.9	0.3	0.3	1	66
20 / 290	3.5	3.9	1.1	1.1	B 1.7	1.5	86	1.4	1.8	0.5	0.5	1	66
30 / 435	3.2	3.8	1.3	1.3	B 1.7	2	86	1.1	1.7	0.7	0.7	1	66
40 / 580	3.0	3.7	1.7	1.7	B 2	2	86	0.9	1.6	0.8	0.9	1	66
50 / 725	2.7	3.6	2.0	2.1	B 2.3	3	88	-	1.5	-	1.1	1.5	71
60 / 870	2.5	3.5	2.4	2.5	B 2.9	3	97	-	1.4	-	1.2	1.5	71
70 / 1015	2.3	3.4	2.8	2.8	B 3.5	4	99	-	1.3	-	1.5	2	75
80 / 1160	2.1	3.3	3.1	3.2	B 3.5	4	99	-	1.2	-	1.6	2	75
90 / 1305	1.9	3.2	3.5	3.6	B 4	4	126	-	1.1	-	1.7	2	75
100 / 1450	1.7	3.1	3.8	3.9	B 4.4	5.4	126	-	1.1	-	2.0	3	99
110 / 1595	1.5	3.0	4.2	4.3	B 4.4	5.4	126	-	-	-	-	-	-
120 / 1740	1.3	3.0	4.6	4.7	B 5.4	5.4	128	-	-	-	-	-	-
130 / 1885	-	2.9	-	5.1	B 5.4	5.4	128	-	-	-	-	-	-
140 / 2030	-	2.8	-	5.4	B 6.7	7.5	139	-	-	-	-	-	-
150 / 2175	-	2.7	-	5.8	B 6.7	7.5	139	-	-	-	-	-	-
BFS140/	Q_{Th}¹⁾ 5.5		-	-	-	-	-	Q_{Th}¹⁾ 2.8		-	-	-	-
10 / 145	5.0	5.3	0.8	0.9	B 1.7	1.5	86	2.2	2.5	0.4	0.4	1	66
20 / 290	4.6	5.2	1.2	1.3	B 1.7	2	86	1.9	2.4	0.5	0.7	1	66
30 / 435	4.3	5.0	1.7	1.9	B 2	2	86	1.5	2.3	0.8	0.9	1.5	71
40 / 580	4.0	4.9	2.1	2.3	B 2.5	3	97	1.2	2.1	1.1	1.2	1.5	71
50 / 725	3.7	4.8	2.7	2.8	B 2.9	4	97	1.0	2.0	1.3	1.5	2	75
60 / 870	3.4	4.6	3.1	3.4	B 3.5	4	99	0.7	1.9	1.5	1.7	2	75
70 / 1015	3.2	4.5	3.6	3.8	B 4.4	4	126	-	1.7	-	1.9	3	99
80 / 1160	2.9	4.4	4.0	4.3	B 4.4	5.4	126	-	1.6	-	2.1	3	99
90 / 1305	2.7	4.3	4.6	4.7	B 5.4	5.4	128	-	1.5	-	2.4	3	99
100 / 1450	2.5	4.1	5.0	5.2	B 5.4	7.5	132	-	1.4	-	2.7	3	99
110 / 1595	2.2	4.0	5.5	5.8	B 6.7	7.5	139	-	-	-	-	-	-
120 / 1740	1.9	3.9	5.9	6.2	B 6.7	7.5	139	-	-	-	-	-	-
130 / 1885	1.7	3.8	6.4	6.7	B 7.4	7.5	139	-	-	-	-	-	-
140 / 2030	-	3.7	-	7.1	B 7.4	7.5	139	-	-	-	-	-	-
150 / 2175	-	3.6	-	7.6	B 8	10	192	-	-	-	-	-	-

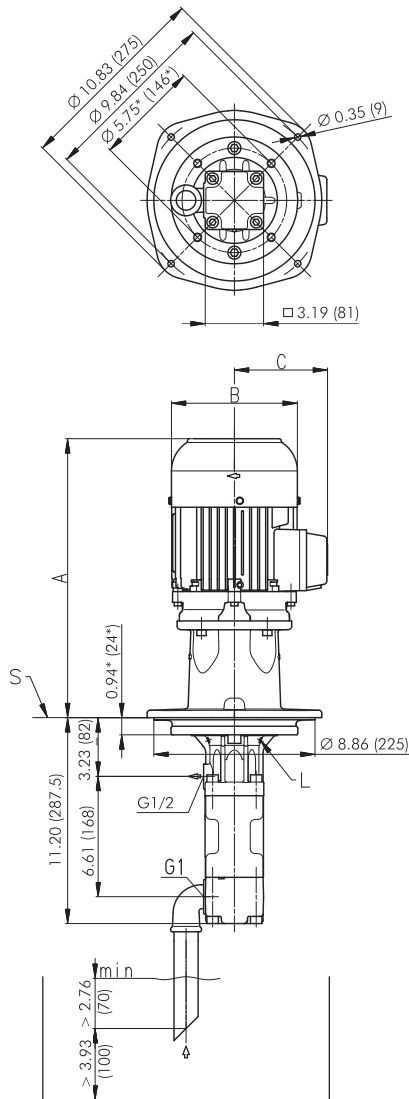
¹⁾ Q_{Th}: Theoretical flow rate ; Viscosity > 90 SSU more power consumption.

Higher pressure for water soluble coolants (up to 2900 psi / 200 bar) upon request.

Characteristics and dimensions

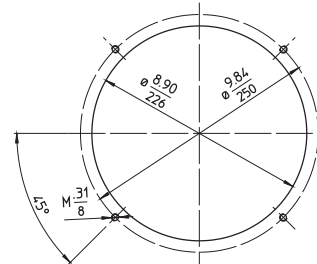
BFS1, FFS1

50 Hz

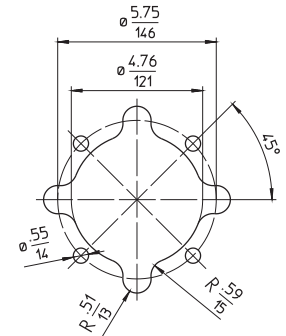


Mounting hole patterns

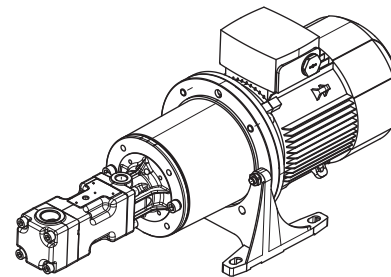
BFS1 / BFS2



TFS1 / TFS2



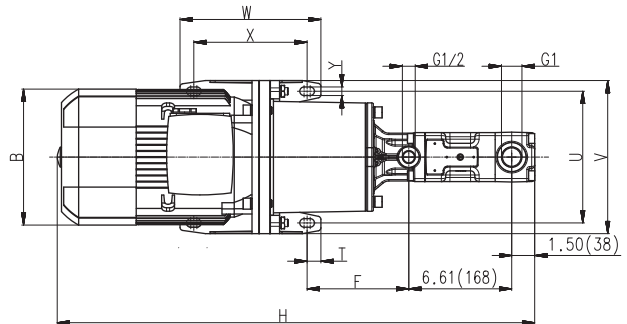
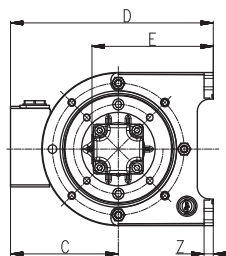
Dimensions in Inches / mm
All corners must be deburred!
According to ISO 2768-m



*) Dimensions for 4-pole standard motor upon request

L = Leakage hole

S = Mounting plate, please refer to the cut-out of mounting hole



Power 2-poles HP	A Inch	B Inch	C Inch
B 1.7 / 2	16.34	6.93	5.12
B 2.3	17.36	6.93	5.12
B 2.5 / 2.9 / 3.5	18.66	6.93	5.12
B 4 / 4.4 / 5.4	20.20	8.58	5.91
B 6.7 / 7.4	21.38	8.58	5.91
B 8	22.99	10.16	7.60

Power 2-poles HP	Power 4-poles HP	B Inch	C Inch	D Inch	E Inch	F Inch	H Inch	T Inch	U Inch	V Inch	W Inch	X Inch	Y Inch	Z Inch
1	–	6.26	4.76	9.17	6.10	5.43	26.61	0.59	7.09	8.27	3.54	2.36	0.43	0.47
–	1	6.26	4.76	9.17	6.10	5.43	29.57	0.59	7.09	8.27	3.54	2.36	0.43	0.47
1.5	–	6.26	4.76	9.17	6.10	5.43	27.99	0.59	7.09	8.27	3.54	2.36	0.43	0.47
2	1.5 / 2	7.01	4.96	9.37	6.10	5.43	28.39	0.59	7.09	8.27	3.54	2.36	0.43	0.47
3	–	7.01	4.96	9.37	6.10	5.43	29.96	0.59	7.09	8.27	3.54	2.36	0.43	0.47
4	3	7.80	6.54	12.64	7.80	6.54	32.32	0.89	8.46	9.84	9.06	7.28	0.55	0.59
5.4	–	8.74	6.97	13.07	7.80	6.54	31.69	0.89	8.46	9.84	9.06	7.28	0.55	0.59
7.5	–	10.31	7.95	15.24	8.98	6.73	33.74	0.89	10.43	11.81	10.63	8.86	0.55	0.71
10	–	10.31	7.95	15.24	8.98	6.73	35.71	0.89	10.43	11.81	10.63	8.86	0.55	0.71