

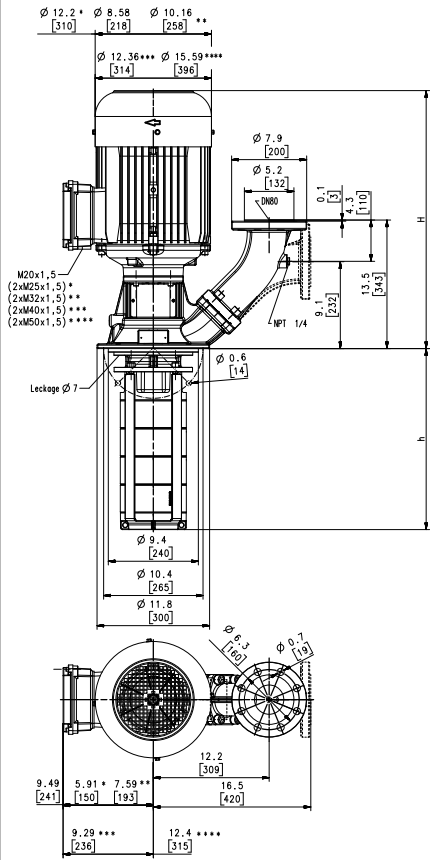
Immersion Pumps

STH21

Closed impellers



STH21



Dimensions in Inches / mm

- *) Dimensions for 7.7 HP to 9.2 HP
- ***) Dimensions for 11.5 HP to 13.8 HP
- Dimensions for 16.9 HP
- ****) Dimensions for 20.1 HP to 34 HP
- *****) Dimensions for 45 HP

Type	Flow at head	Height	Depth of im- mersion		Weight		Power	Voltage	Fre- quen- cy	Current	Speed
	GPM /Feet l/min /m	H inch mm	h inch	h mm	Lbs	kg	HP kW	V	Hz	AMPS	RPM
STH2101-1S260	250/60	23.7	10.12	257	192	87	7.7	230	60	19.0	3520
	900/20	601					5.75	460	60	9.5	3520
STH2101-0S260	250/80	23.7	10.12	257	192	87	8.4	230	60	20.8	3510
	900/26	601					6.3	460	60	10.4	3510
STH2102-2S340	250/140	26.8	13.07	332	278	126	13.8	230	60	31.6	3550
	900/44	680					10.3	460	60	15.8	3550
STH2102-0S340	250/180	27.1	13.07	332	324	147	20.1	230	60	48.2	3560
	900/59	688					15.0	460	60	24.1	3560
STH2103-2S410	250/240	38.7	16.02	407	368	167	25	460	60	28	3560
	900/76	982					18.5				
STH2103_0S410	250/280	41.0	16.02	407	390	177	30	460	60	34	3560
	900/89	1042					22.0				
STH2104-2S490	250/340	44.3	18.98	482	650	295	40	460	60	47	3560
	900/107	1125					30.0				
STH2104-0S490	250/380				655	297					
	900/121										
STH2105-2S560	250/440		21.93	557	659	299					
	900/140										



Immersion Pumps

series STH use **closed impellers** in order to minimize power consumption and to optimize hydraulic pump efficiencies. The STH series offers high pressures at short immersion depths. A **frequency converter** can be supplied for **special applications** or for matching the pump characteristic to a specific duty point. See page "Control/Regulation" in the Technical Information section of this catalog for further information.

Extended lengths are available. See medium pressure pumps features within the technical information section.

Applications

- Types of fluid
 - coolants
 - cooling/cutting oils
- Kinematic viscosity
 - ...200 SSU (...45 mm²/s)
- Pumping temperature
 - 30...194 °F (0...90 °C)

Construction

Pump body	cast iron
Cover	cast iron
Impellers	CrNi-steel
Shaft	CrNi-steel
Diffusers	CrNi-steel
Mechanical seal	SiC
O-rings	Viton
Noise level	
STH2101-1S...STH2101-0S	74 dBA
STH2102-2S	77 dBA
STH2102-0S	79 dBA
STH2103-2S...STH2105-2S	81 dBA

