

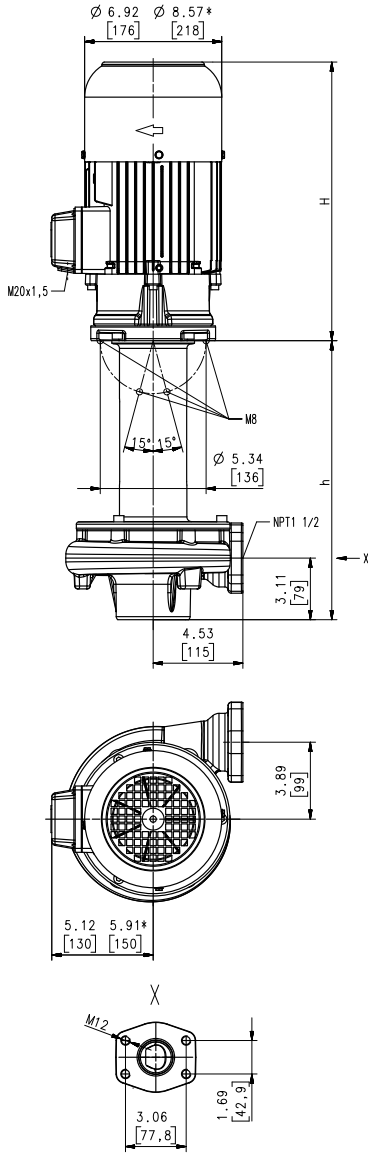
Stainless Steel Immersion Pumps

TVA400...600

Semi-open impellers



TVA400...600



Dimensions in Inches / mm
*) Dimensions for TVA600

Type	Flow at head	Height	Depth of im- mersion		Weight		Power	Voltage	Fre- quen- cy	Current	Speed
	GPM /Feet l/min /m	H inch mm	h inch	h mm	Lbs	kg	HP kW	V	Hz	AMPS	RPM
TVA400S360	100/68	14.1	14.09	358	112.5	51	3.9	230	60	10.2	3480
	400/19	358					2.94	460	60	5.1	3480
	580		22.76	578	125.7	57					
	880		34.57	878	154.4	70					
1100		43.23	1098	168	76						
TVA600S360	100/86	15.6	14.09	358	136.7	62	5.1	230	60	12.8	3520
	400/25	396					3.8	460	60	6.4	3520
	580		22.76	578	149.9	68					
	880		34.57	878	176	80					
1100		43.23	1098	190	86						



Stainless Steel Immersion Pumps

are centrifugal pumps of compact design with a **semi-open impeller** mounted directly onto the extended motor shaft. The TVA pump series will achieve **high hydraulic efficiencies** while being well suited for handling small metal chips and fines. This makes the TVA series the superior choice for industrial washing applications of metal parts. Complete pump and plate assemblies, including discharge pipe and mounting plate are available upon request.

Applications

Types of fluid
 Industry water
 coolants
 cooling/cutting oils
 lees / solvents
 de-ionized water

Kinematic viscosity
 ...90 SSU (...20 mm²/s)

Pumping temperature
 30...194 °F (0...90 °C)

Max. chip to coolant ratio by weight:
 0.03 %

Construction

Pump body	CrNi-steel
Cover	CrNi-steel
Impeller	CrNi-steel
Shaft	CrNi-steel
Optional:	
Suction cover	with threaded G 2 ½ inlet
Noise level (Motor only; Tolerance +3 dBA)	
TVA400	69 dBA
TVA600	74 dBA

