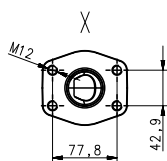
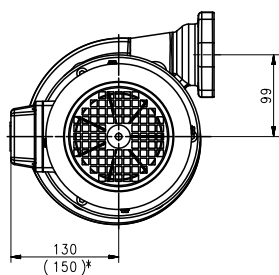
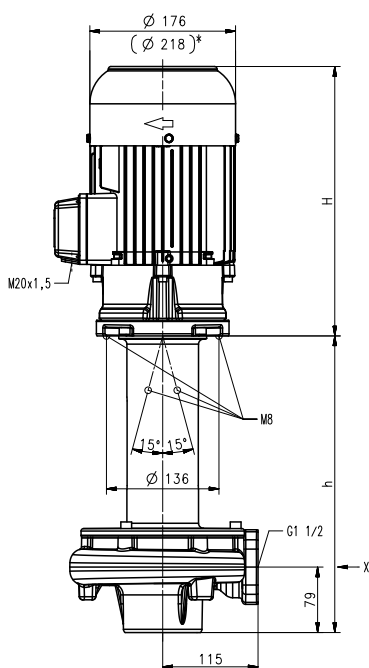


Stainless Steel Immersion Pumps

TVA400...600

Semi-open impellers

TVA400...600



*) Dimensions for TVA600/60Hz

Type	Vol. del. at manom. del. head l/min /m	Height H mm	Depth of immersion h mm	Weight kg	Power kW	Voltage 3~ V	Fre- quen- cy Hz	Current A	Speed 1/min
TVA400/360	400/11	325	358	47	1.7	220-240	50	6.24	2890
580			578	53					
880			878	66					
1100			1098	72					
TVA400/360	400/19	358	358	51	2.94	460	60	5.1	3480
60Hz									
580			578	57					
60Hz									
880			878	70					
60Hz									
1100			1098	76					
60Hz									
TVA600/360	400/15	358	358	50	2.2	220-240	50	7.8	2890
580			578	56					
880			878	69					
1100			1098	75					
TVA600/360	400/25	396	358	62	3.8	460	60	6.4	3520
60Hz									
580			578	68					
60Hz									
880			878	80					
60Hz									
1100			1098	86					
60Hz									

Stainless Steel Immersion Pumps

are centrifugal pumps of compact design with a **semi-open impeller** mounted directly onto the extended motor shaft. The **TVA** pump series achieves **very good hydraulic efficiencies** while being well suited for handling small metal chips and fines. This makes this pump series the perfect choice for industrial washing applications of metal parts. Complete pump and plate assemblies, including discharge pipe and mounting plate are available upon request.

Applications

Types of fluid
 Industry water
 coolants
 cooling/cutting oils
 lees / solvents
 de-ionized water
 Kinematic viscosity
 ...20 mm²/s (20 cSt)
 Pumping temperature
 0...90° C
 Max. chip to coolant ratio by weight:
 0.03 %

Construction

Pump body	CrNi-steel
Cover	CrNi-steel
Impeller	CrNi-steel
Shaft	CrNi-steel
Noise level	
TVA400	66 dBA
TVA600	69 dBA
TVA400/60Hz	69 dBA
TVA600/60Hz	74 dBA

