

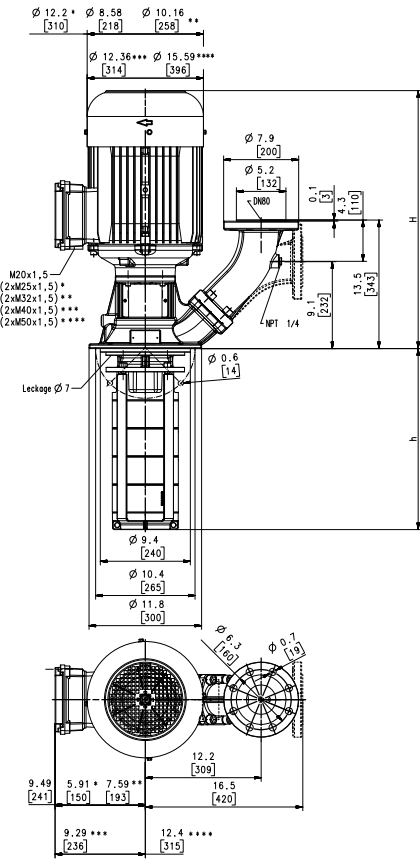
Immersion Pumps

STH28

Closed impellers



STH28



Dimensions in Inches / mm

*) Dimensions for 7.7 HP to 9.2 HP

***) Dimensions for 11.5 HP to 13.8 HP

Dimensions for 16.9 HP

****) Dimensions for 20.1 to 34 HP

*****) Dimensions for 45 HP

Type	Flow at head	Height	Depth of im- mersion		Weight		Power HP kW	Voltage 3~ V	Fre- quen- cy Hz	Current AMPS	Speed RPM
	GPM /Feet l/min /m	H inch mm	h inch	h mm	Lbs	kg					
STH2801-1S280	350/75	25.3	10.71	272	247	112	10	230	60	23.0	3545
	1300/22	642					7.48	460	60	11.5	3545
STH2801-0S280	350/100	26.8	10.71	272	276	125	13.8	230	60	31.6	3550
	1300/29	680					10.3	460	60	15.8	3550
STH2802-2S370	350/155	27.1	14.25	362	331	150	20.1	230	60	48.2	3560
	1300/47	688					15.0	460	60	24.1	3560
STH2802-0S370	350/200	41.0	14.25	362	390	177	30	460	60	34	3560
	1300/61	1042					22.0				
STH2803-2S460	350/265	44.3	18.11	460	650	295	40	460	60	47	3560
	1300/80	1125					30.0				
STH2803-0S460	350/310				657	298					
	1300/95										



Immersion Pumps

series STH use **closed impellers** in order to minimize power consumption and to optimize hydraulic pump efficiencies. The STH series offers high pressures at short immersion depths. A **frequency converter** can be supplied for **special applications** or for matching the pump characteristic to a specific duty point. See page "Control/Regulation" in the Technical Information section of this catalog for further information.
Extended lengths are available. See medium pressure pumps features within the technical information section.

Applications

- Types of fluid
 - coolants
 - cooling/cutting oils
- Kinematic viscosity
 - ...415 SSU (...90 mm²/s)
- Pumping temperature
 - 30...194 °F (0...90 °C)

Construction

Pump body	cast iron
Cover	cast iron
Impellers	CrNi-steel
Shaft	CrNi-steel
Diffusers	CrNi-steel
Mechanical seal	SiC
O-rings	Viton
Noise level (Motor only; Tolerance +3 dBA)	
STH28-1S...STH2801-0S	77 dBA
STH2802-2S	79 dBA
STH2802-0S...STH2803-0S	81 dBA

